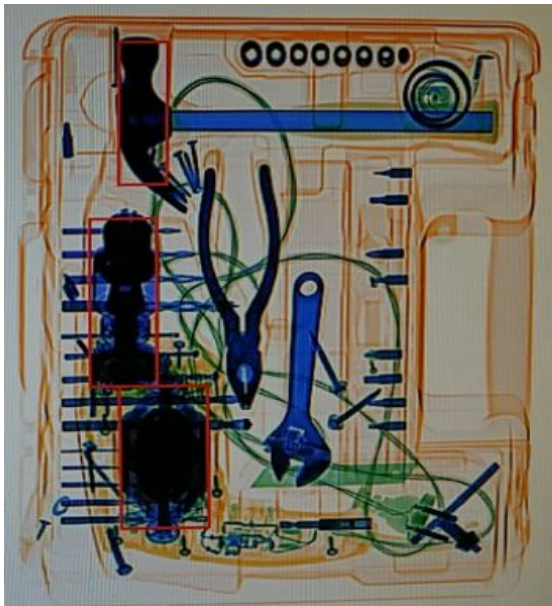
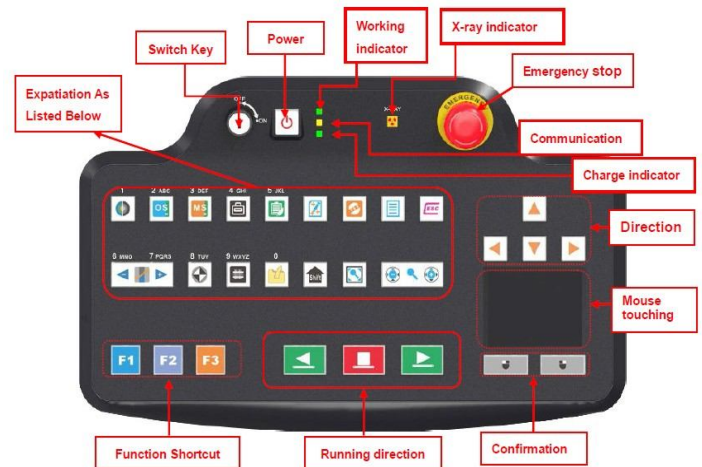




Model: 100100



High resolution image



Friendly operation keyboard

◆ **General Specification :**

Dimensions (L×W×H) :3644.5mm x1295mm x1922 mm
Device Weight: 1080Kg
Tunnel Size: 1008(W)mm×1009(H)mm
Conveyor Speed: 0.2m/s
Conveyor height : 342mm
Conveyor Max Load:200kg
Wire Resolution:38AWG Guarantee, 40 AWG typical
Penetration: 34mm steel
Film Safety :Guarantee ASA/ISO1600 Film
X-ray Leakage: <1 μSv/h (at a distance of 5cm From external housing)
Dual direction Scanning

◆ **Image System :**

Technical Principle: Dual-energy X-ray Imaging; L Shaped Array,
X-ray Sensor: L-Shaped Photodiode Array (**multi-energetic**) , 16bit Deep
Image Display: High resolution of 1024 * 1280 pixel; Image Grey Level: 65536
Image Enhancement: 1-64times enlargement continuity, Color/BW, negative, high/low penetration, organic /inorganic Stripping, general enhancement, and pseudo color, etc.
Image Recall: 30 images recallable, retrieval.
Explosives & Narcotics Detection: Explosives & narcotics alarm and highlight according to atomic number signature
High Density Region Alarm: Impenetrable region alarm and highlight, for possible concealing of threats and contraband
Threat Image Projection: Inserting fictional, but realistic images of threat items into baggage during screening operation, for maintenance of vigilance, as well as training and assessment of image identification capability
Image Archive: Up to 50,000 images stored automatically, enable transferring to USB disk, and converting to XF、PNG、BMP、JPEG、TIFF、GI etc formats
Miscellaneous Functions : Time/date display, counters, user management, system-on/X-ray-on timers, power on self test, built-in diagnostic facilities, dual-direction scanning, system log, system standby and stimulant training, ADS etc.
Network Applications: Multiple remote applications available based on Ethernet LAN and windows platform, such as image centralized storage and identify, recheck workstation, and network TIP, etc (Optional) .
Images process: 24bit real time processing ,4colors analysis, Images displayed marked date and ID NO ,Count the number of bags ,Memory gray level:65536
Software password protection : All software features of machine are online and password Protected and all software features are controlled from key board of machine only
Online recording facility : The machine has online recording facility and images can be transferred to external storage device through USB port.
Through put : 720 bags per hour for hand and checked baggage
Dual-energy distinguish retrieval Objects: Selective detection of Objects by atomic number, organic objects in orange, inorganic objects in blue, mixture in green.

◆ **Operating Environment:**

Operation temperature/Humidity: 0°C-40°C/0%-95 % (non-condensing)
Storage Temperature/Humidity: -20°C to 60°C/ 0%-95 % (non-condensing)
Operation Power: 187~240VAC, 50/60Hz (Optional: 100VAC, 110VAC, 120VAC, 200VAC)
Power Consumption: 1.0KVA
Noise: <58db

◆ **Computer Character:**

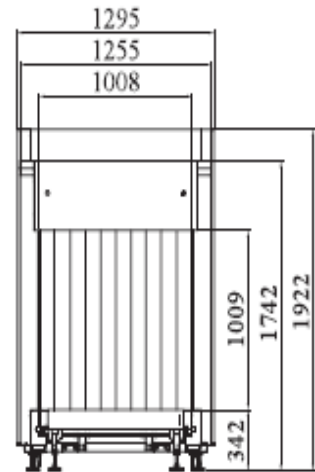
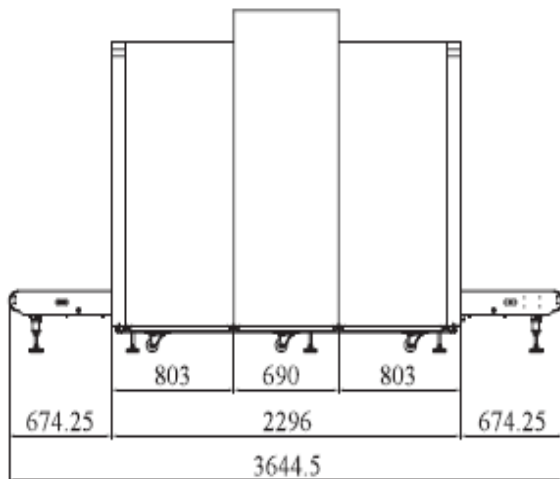
CPU: Inter (R), 2.60-2.70GHz
Storage: 2GB 1600MHz DDR3
Hard Disk: 500G
Computer system: Windows XP
Monitor: 2x17" LED, monitors, resolution : 1280x1024

◆ **X-ray Generator:**

X ray generator Voltage: 160KV
Generator tube current: 0.2-1.2mA (adjustable)
Generator angle: 80 degree
Generator Brand: Spellman (USA brand)
Beam direction: from top to bottom

◆ **Other Characters:**

Cooling / Duty Cycle: 100% No warm up (Oil Cooling)
Detect PCB board: UK brand Senstech
Extension Rollers: customize size length
UPS: 15mins, 30mins, 60mins etc, optional



Certificates: ☆ISO19001 ☆ISO14001 ☆OHSMS18001 ☆CE ☆FDA ☆Health Inspection Report
 ☆Computer Software Copyright Registration Certificate ☆Software Product Registration Certificate
 ☆ Certificate from Ministry of Public Security ☆Safety and Police Electronic Products Quality Inspection Center
 ☆Patent No. : 201020700245.2 ☆Patent No. :201020700245.8 ☆Patent No. : 201020700256.0